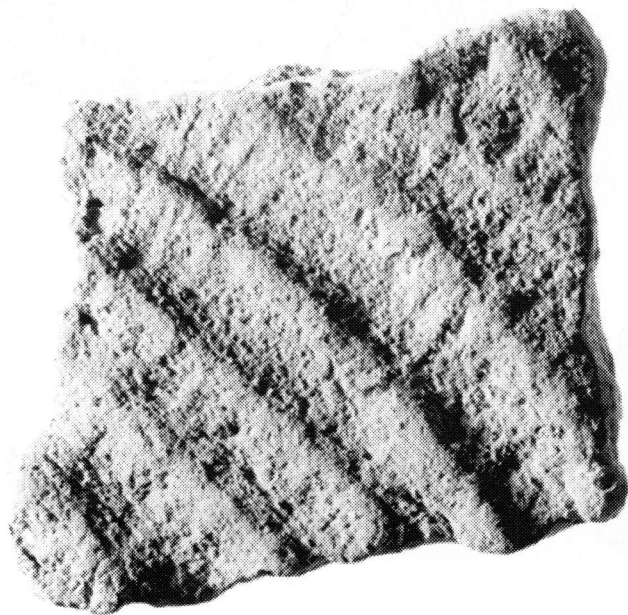
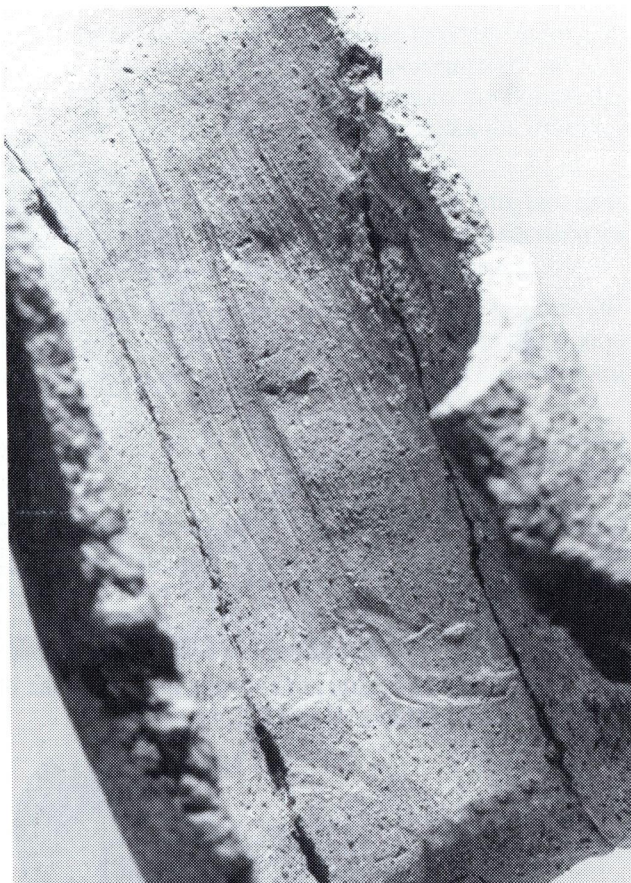


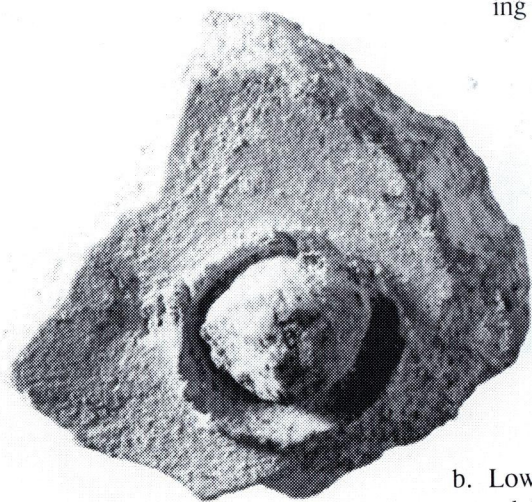
a. Base of cooking pot showing imprint of the object on which it was placed during manufacture (Marki *Alonia* P 614).



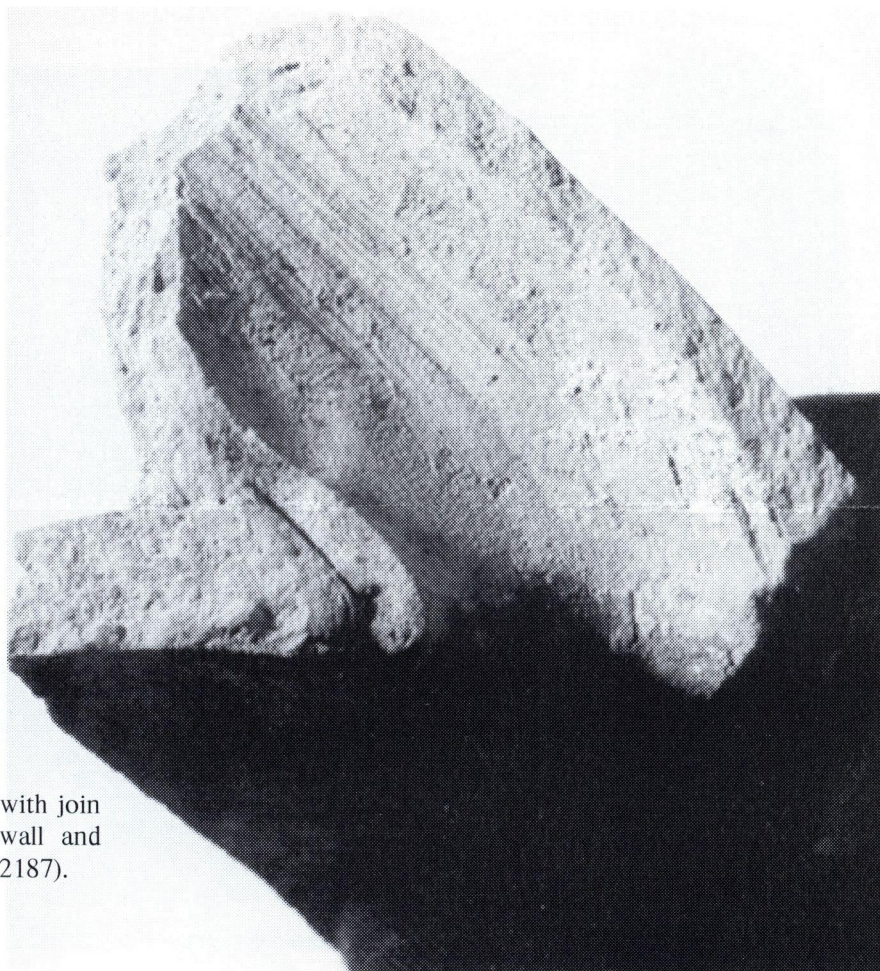
b. Base of flat-based vessel with basketry impression (Marki *Alonia* P 2055).



a. Interior of cylindrical neck showing marks of scraping tool (Marki *Alonia* P 741).



b. Lower terminal of handle from closed vessel (Marki *Alonia* P 977).



a. Spouted bowl sherd with join void between vessel wall and spout (Marki *Alonia* P 2187).



b. Spout from closed vessel (Marki *Alonia* P 627).

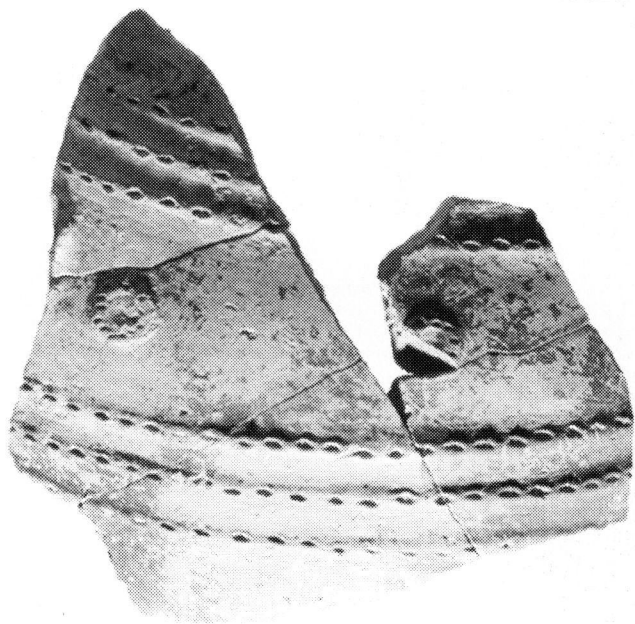
a. Handle with irregular lustre resulting from incomplete burnishing (Marki *Alonia* P 1064).



b. Sherd with fine lime-filled incision (Marki *Alonia* P 361).

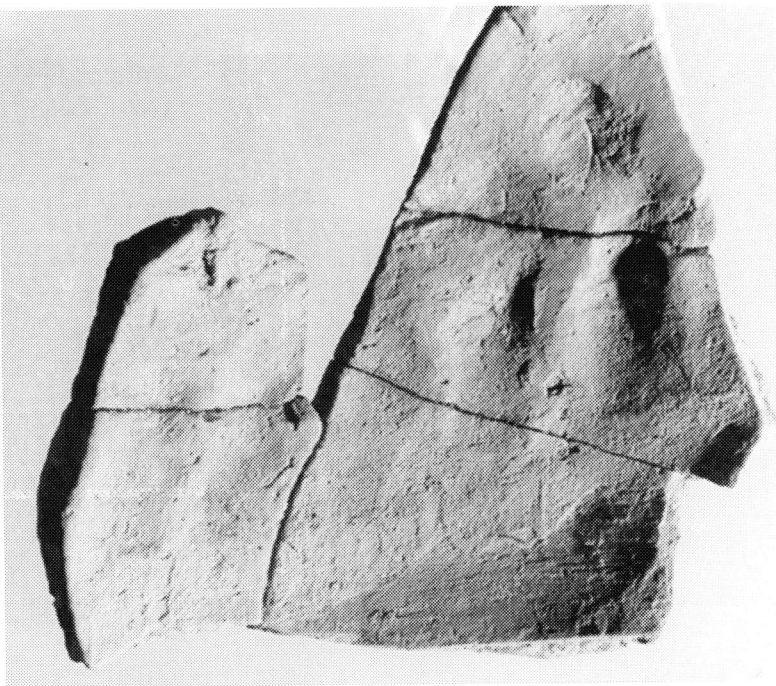


a. Sherd with coarse incision (Marki *Alonia* P 707).



b. Sherd with impressed relief decoration (Marki *Alonia* P 284).

a. Reverse of Pl. Vb showing fingertip impressions on interior.



b. Cooking pot (Marki *Alonia* P 614).