



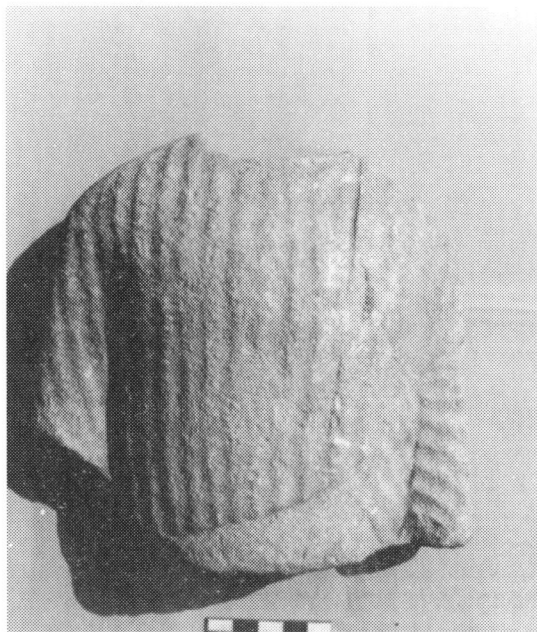
a. The sanctuary area, from SE. The site lies on either side of the road in the centre of the photograph.



b. View from the site across the Ayiou Mina valley, to N.

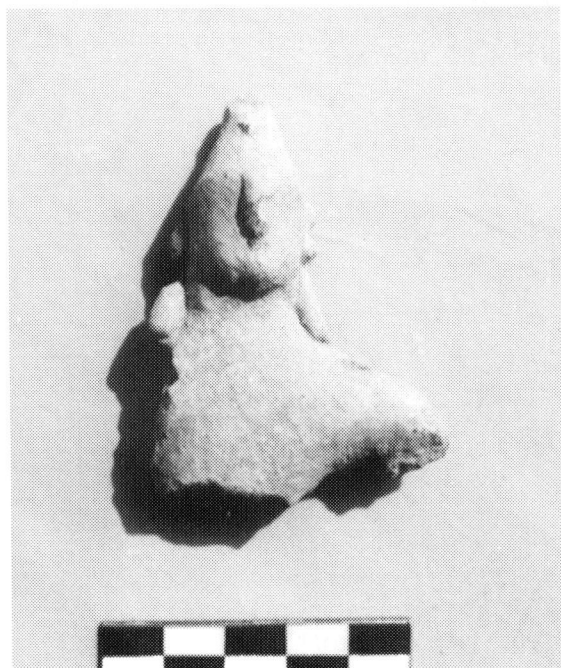


a. The looted sanctuary area at the south end of plot 322, from SE.



b. VVP 136.3. A limestone statuette torso fragment of a male votary wearing a crinkle pleated tunic and a mantle. Pres. Ht. 17 cm.

a. VVP 136.13. A limestone statuette lower body fragment of a votary wearing Greek style drapery. Pres. Ht. 12.5 cm.



b. VVP 136.40. A terracotta figurine head and upper torso of a helmeted male. Pres. Ht. 6.75 cm.





b. VPP 136.100. A limestone statuette head fragment of a flute-player. Pres. Ht. 11.0 cm.



a. VVP 136.85. A terracotta statue fragment with detail of a strap. Pres. Ht. 9.6 cm.



a. VVP 136.41. A terracotta figurine torso of a male rider. Pres. Ht. 6.25 cm.



b. VVP 136.31. A terracotta figurine torso of a horse with traces of an attached rider. Pres. L. 8.0 cm.



a. VVP 136.32. A terracotta figurine torso of a horse. The single rear leg suggests that it originally formed part of a chariot group. Pres. L. 7.5 cm.



b. VVP 136.53 A life - size terracotta talon. Pres. L. 6.5 cm.



c. VVP 136.8. A limestone figurine head of the god Pan. Pres. Ht. 5.5 cm.